

U-shape connector with hex grub screw for straight and branch connections

Suitable for **branch connections without interrupting main cable**



APPLICATIONS

- Straight and branch connection of copper conductors up to 0.6/1 kV
- Suitable for use in Shark Classic (page 52) joints

KEY FEATURES

- No crimping tool required for installation

Cross-sections evaluated for uninterrupted main cable

FEATURES

- **MU-6/10 e MU-16/35**
Brass conductor body with steel hex grub screw
- **MU-10/25-AI**
Tinned brass conductor body with plastic insulation and two steel hex grub screws

cores	ref.	item	conductor cross-section range (mm ²)		conductor materials			dimensions length × width × hgt. (mm)	pack. (pcs)	min./mult. ord. qty (pcs)	
			main	branch	Cu/Cu	Al/Al	Cu/Al				
	●	MU0610	MU-6/10	2.5-25	1.5-10	•	-	-	13 × 12 × 15	10	10
	●	MU1635	MU-16/35	2.5-50	1.5-35	•	-	-	20 × 15 × 22	10	10
	●	MU1025AI	MU-10/25-AI	10-25	2.5-25	•	•	-	45 × 18 × 32	10	10

Insulated terminal blocks with hex grub screw for branch joints

Suitable for **branch connections without interrupting main cable**



APPLICATIONS

- Straight and branch connection of copper conductors up to 0.6/1 kV

KEY FEATURES

- No crimping tool required for installation
- Hex key included

FEATURES

- PA insulating body
- Brass clamping units
- Steel hex grub screws

cores	ref.	item	conductor cross-section range (mm ²)		conductor materials			length (mm)	pack. (pcs)	min./mult. ord. qty (pcs)	
			main	branch	Cu/Cu	Al/Al	Cu/Al				
	●	MU5P0610RJ	MU50610-RJ	6 – 16	2.5 – 16	•	-	-	32	1	1
	●	MU5P1635RJ	MU51635-RJ	16 – 35	2.5 – 35	•	-	-	38	1	1

BH

H-shape connector with hex grub screw

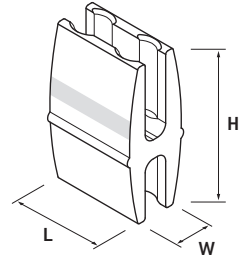
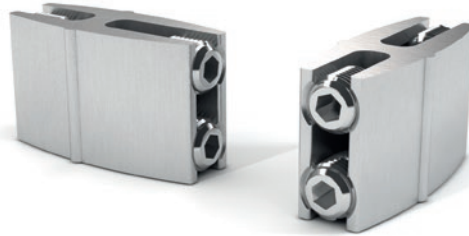
tinned aluminium
for branch connections

!NEW

Suitable for
copper-to-aluminium
branch connections

APPLICATIONS

- Branch connection of 0.6/1 kV low voltage wires
- Suitable for **copper-to-copper, aluminium-to-aluminium, and copper-to-aluminium** connections




KEY FEATURES

- Suitable for **copper-to-aluminium** branch connections

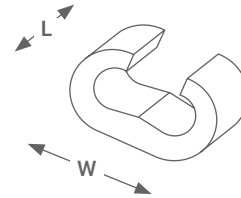
FEATURES

- Tinned aluminium
- Two hex grub screw

CONNECTING ELEMENTS

cores	ref.	item	conductor cross-section range (mm ²)		conductor materials			dimensions L × W × H (mm)	min./mult. ord. q.ty (pcs)	
			main	branch	Cu/Cu	Al/Al	Cu/Al		pkg. (pcs)	10
	!NEW BH1616A	BH-16/16-A	6-16	6-16	•	•	•	20 × 15 × 35	10	10

C-shape compression connectors for branch connections



APPLICATIONS


- Branch connection of low voltage conductors up to 0.6/1 kV
- Suitable for use in Shark Classic (p. 52), Submarine (p. 62) and Sealjoint D (page 68) joints

KEY FEATURES

- Complete range for most commonly used cable cross-sections
- Suitable for copper-to-copper and aluminium-to-aluminium connections

FEATURES

- Tinned copper

cores	ref.	item	conductor cross-section range (mm ²)		conductor materials			size L × W (mm)	pack. (pcs)	min./mult. ord. q.ty (pk)
			main	branch	Cu/Cu	Al/Al	Cu/Al			
	BC006006	BC 6-6	2.5-6	1.5-6	●	●	–	9 × 10	20	20
	BC010010	BC 10-10	10	1.5-10	●	●	–	12 × 11.8	20	20
	BC016016	BC 16-16	16	1.5-16	●	●	–	17 × 19.4	20	20
	BC025010	BC 25-10	16-25	1.5-10	●	●	–	17 × 18.6	10	10
	BC025016	BC 25-16	16-25	1.5-16	●	●	–	17 × 18.6	10	10
	BC025025	BC 25-25	25	16-25	●	●	–	17 × 20.6	10	10
	BC035035	BC 35-35	35	25-35	●	●	–	20.5 × 26.6	5	5
	BC050050	BC 50-50	50	25-50	●	●	–	20.5 × 26.6	5	5
	BC070035	BC 70-35	50-70	6-35	●	●	–	24 × 31.4	5	5
	BC070070	BC 70-70	50-70	50-70	●	●	–	24 × 31.4	5	5
	BC095035	BC 95-35	95	6-35	●	●	–	25 × 41.2	5	5
	BC095070	BC 95-70	95	35-70	●	●	–	25 × 40.9	5	5
	BC095095	BC 95-95	95	95	●	●	–	29 × 40.9	5	5
	BC120120	BC 120-120	120	25-120	●	●	–	30 × 44.6	5	5
	BC150150	BC 150-150	150	120-150	●	●	–	31 × 45.3	5	5
	BC185095	BC 185-95	150-185	16-95	●	●	–	31 × 44.4	1	1
	BC185185	BC 185-185	185	185	●	●	–	22.6 × 68	1	1
	BC240120	BC 240-120	240	240	●	●	–	25 × 69	1	1
	BC240240	BC 240-240	240	120	●	●	–	25 × 69	1	1
BC300300	BC 300-300	300	300	●	●	–	30 × 65	1	1	