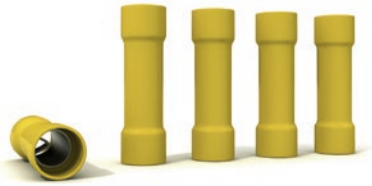


Suitable for **copper-to-copper and aluminium-to-aluminium** connections



APPLICATIONS


- Straight connection and insulation of 0.6/1 kV conductors

KEY FEATURES

- Range-taking (multi-section)
- Simple, quick and reliable installation

FEATURES

- Tinned copper conductor bodies
- Supplied in 5 pcs package

cores	ref.	item	conductor cross-section range (mm ²)	conductor material			length (mm)	colour	pkg. (pcs)	min./mult. ord. q.ty (pk)
				Cu/Cu	Al/Al	Cu/Al				
 5x	CP0306	CP 306	2,5 – 6	•	•	-	40	giallo	5	5

Maximum protection of **conductors** thanks to internal hot melt sealant lining



APPLICATIONS


- Straight connection and insulation of 0.6/1 kV electric conductors

KEY FEATURES

- Range-taking (Multi-section)
- Simple, quick and reliable installation
- Sealing against water and moisture, condensation and corrosion
- Protection against vibrations
- Visual inspection of the connection through transparent body

FEATURES

- Polyolefin outer insulating body
- Internal hot melt sealant lining
- Operating temperature: from -55 °C to 125 °C

cores	ref.	item	conductor section min-max (mm ²)	conductor material			length (mm)	colour	pack. (pcs)	min./mult. ord. q.ty (pk)
				Cu/Cu	Al/Al	Cu/Al				
	CT0515	CTT 0,5/1,5	0.5 – 1.5	•	•	-	35	red	100	1
	CT1525	CTT 1,5/2,5	1.5 – 2.5	•	•	-	35	blue	100	1
	CT0306	CTT 3/6	4 – 6	•	•	-	40	yellow	50	1

Suitable for copper-to-copper, aluminium-to-aluminium and copper-to-aluminium connections



APPLICATIONS

- Straight connection of electric cable conductors up to 0.6/1 kV
- Suitable for use in Shark Classic (page 48) and Submarine (page 60) joints

KEY FEATURES

- No crimping tool required for installation

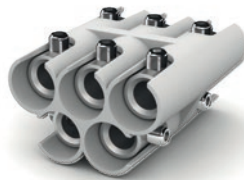
FEATURES

- Tinned aluminium body
- Steel hex grub screws

cores	ref.	item	conductor cross-section range (mm ²)	conductor material			length (mm)	pack. (pcs)	min./mult. ord. qty (pcs)
				Cu/Cu	Al/Al	Cu/Al			
	MC0010	MC10	1.5 – 10	•	•	•	30	10	10
	MC0025	MC25	2.5 – 25	•	•	•	40	10	10



Suitable for copper-to-copper, aluminium-to-aluminium and copper-to-aluminium connections



APPLICATIONS

- Straight connection of electric cable conductors up to 0.6/1 kV
- Suitable for use in Shark Sixeight (page 46) joints

KEY FEATURES

- No crimping tool required for installation
- Hex key included
- **Compliant to Standard EN 60998-2-1** (certified by Bureau Veritas)

FEATURES

- PA insulating body
 - Tinned aluminium clamping units
 - Steel hex grub screws
- * *f. flexible conductor*
r. rigid conductor

cores	ref.	item	conductor cross-section range (mm ²)	conductor material			length (mm)	pack. (pcs)	min./mult. ord. qty (pcs)
				Cu/Cu	Al/Al	Cu/Al			
	MC0306RJ	MC306-RJ	1.5 – 10	•	•	•	40	1	1
	MC0506RJ	MC506-RJ	1.5 – 6	•	•	•	40	1	1
	MC0510RJ	MC510-RJ	f. 1.5 – 6 r. 1.5 – 10	•	•	•	40	1	1
	MC0525RJ	MC525-RJ	f. 2.5 – 16 r. 2.5 – 25	•	•	•	50	1	1

Suitable for **copper-to-copper**, **aluminium-to-aluminium** and **copper-to-aluminium** connections



APPLICATIONS


- Straight connection of electric cable conductors up to 0.6/1 kV
- Suitable for use in Shark Sixeight (page 46), Shark Classic (page 48) and Submarine (page 60) joints

KEY FEATURES

- No crimping tool required for installation
- Bolt head shearing ensures the application of correct tightening torque

FEATURES

- Tinned aluminium body
- Steel shear head bolts

cores	ref.	item	conductor cross-section range (mm ²)	conductor material			length (mm)	pack. (pcs)	min./mult. ord. qty (pcs)
				Cu/Cu	Al/Al	Cu/Al			
	MR0050	MR 10	6 – 50	•	•	•	53	1	1
	MR0051	MR 11	50 – 95	•	•	•	58	1	1
	MR0052	MR 12	95 – 240	•	•	•	119	1	1
	MR0053	MR 13	150 – 300	•	•	•	130	1	1

Screw-type terminal strip for straight joints

Suitable for **copper-to-copper** and **aluminium-to-aluminium** connections



APPLICATIONS


- Straight connection of electric cable conductors up to 0.6/1 kV
- Suitable for use in Shark Sixeight® (page 46) joints

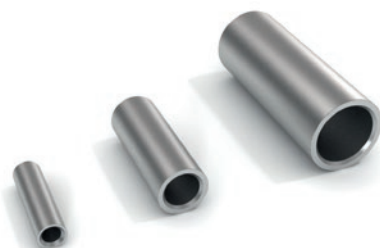
KEY FEATURES

- No crimping tool required
- Installation with a common slotted screwdriver

FEATURES

- PA insulating body
- Tinned aluminium clamping units
- Steel slot head screws
- Rated current 20 A
- Compliant to EN 60998-2-1
- CSA/UL and VDE approved

cores	ref.	item	conductor cross-section range (mm ²)	conductor material			length (mm)	pack. (pcs)	min./mult. ord. qty (pcs)
				Cu/Cu	Al/Al	Cu/Al			
	MH0306	MH 306	2.5 – 6	•	•	–	40	10	10

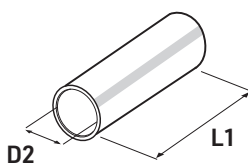



APPLICATIONS

- Straight connection of electric cable conductors up to 0.6/1 kV
- Suitable for copper-to-copper and aluminium-to-aluminium connections
- Suitable for use in Shark Sixeight (page 46), Shark Classic (page 48), Submarine (page 60), Sealjoint (page 65) and Sealjoint Fire (page 66) joints

FEATURES

- Tinned copper
- Bevelled at both ends for easier conductor insertion



cores	ref.	item	conductor cross-section range (mm ²)	conductor materials			inner diameter D2 (mm)	length L1 (mm)	pack. (pcs)	min./mult. ord. qty (pcs)
				Cu/Cu	Al/Al	Cu/Al				
	SC001	SC 1,5	1.5	●	●	–	1.6	15	50	50
	SC002	SC 2,5	2.5	●	●	–	2.3	15	50	50
	SC006	SC 6	4 – 6	●	●	–	3.6	22	20	20
	SC010	SC 10	10	●	●	–	4.6	25	20	20
	SC016	SC 16	16	●	●	–	5.8	27	20	20
	SC025	SC 25	25	●	●	–	7	29	10	10
	SC035	SC 35	35	●	●	–	8.9	33	10	10
	SC050	SC 50	50	●	●	–	10	37	10	10
	SC070	SC 70	70	●	●	–	11.3	39	5	5
	SC095	SC 95	95	●	●	–	13.5	43	5	5
	SC120	SC 120	120	●	●	–	15.2	47	5	5
	SC150	SC 150	150	●	●	–	16.7	58	5	5
	SC185	SC 185	185	●	●	–	19.2	64	5	5
	SC240	SC 240	240	●	●	–	21.1	75	5	5
	SC300	SC 300	300	●	●	–	23.7	90	1	1
	SC400	SC 400	400	●	●	–	27	94	1	1
	SC500	SC 500	500	●	●	–	30.3	98	1	1
	SC630	SC 630	630	●	●	–	33.4	105	1	1
	SC800	SC 800	800	●	●	–	38	112	1	1
SC999	SC 1000	1000	●	●	–	44	120	1	1	