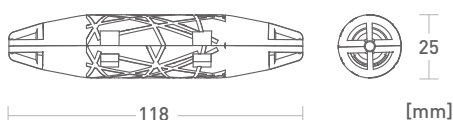


## APPLICATIONS

- Connection, insulation and protection of small cables, even in the presence of water: road and carriageway signs, gardens, fountains, passage ground lighting, residential and environmental indoor lighting, LED lighting systems, video surveillance systems, industrial and civil automation (barriers, gates)
- Installation in cable ducts, corrugated pipes, poles

## KEY FEATURES

- No rising damp along the cable due to capillarity effect
- Complete protection from water, dust, debris and weathering
- Quick and reliable installation in narrow spaces with no special tools needed
- Low number of components to assemble
- No cable gland or any other component to be slid on the cable preventively
- Mechanical safety against cable extraction in case of traction or external mechanical stress



Degree of protection (EN 60529)  
**IP68**

Self-extinguishing  
**EN 60695-2-11**

Rated voltage  
**450 V**

Rated current  
**24 A**

Conductor Cross-section  
(rigid and flexible)  
**0.5 – 1.5 mm<sup>2</sup>**



CE Marking



Total protection



Zero capillarity



Double insulated



Simplified  
installation



Compact size



Re-enterable



Unlimited shelf life



Compliant to Directive  
EU 2015/863 (RoHS 3)



Halogen free



Non-toxic



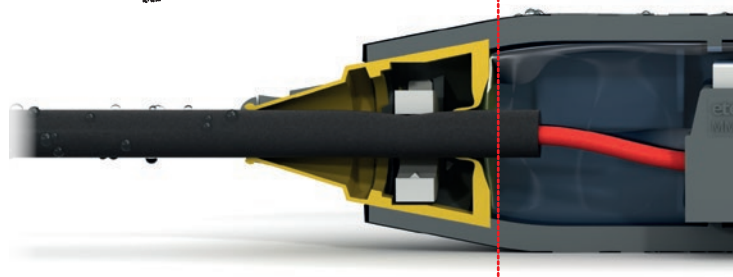
Eco-friendly



## Zero Capillarity, no condensation

The silicone gel inside Ledjoy guarantees long-term high protection and insulation, preventing moisture entering in the shell, the rise of damp along the cable due to capillary effect and the formation of condensation inside the appliances, a frequent cause of damage (especially LED lighting fixtures)

**NO CONDENSATION IP68**



cores	ref.	item	Included connectors	conductor section (mm <sup>2</sup> )	cable diameter min-max (mm)	pack. (pcs)	min./mult. ord. qty (pcs)	video tutorial
 	LDJ01	LEDJOY	 	0.5 – 1.5	5 – 9	1	12	

## Two connectors included

### 2-core insulated connector with spring clamping

- quick and easy connection with no clamping tools required
- high tensile strength without damaging small cross-section conductors



### 3-core insulated connector with screw clamping

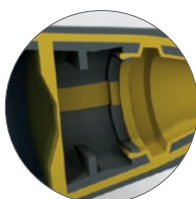
- for three-core cables
- with protective strips for small cross-section conductors



## Co-moulding technology

### Rigid shell

- mechanical protection



### Flexible seals and walls

- easy cable housing without the need to shear or remove rigid walls
- sealing along the entire shell edge



## Cable blocking system

custom designed



## Versatility of application

