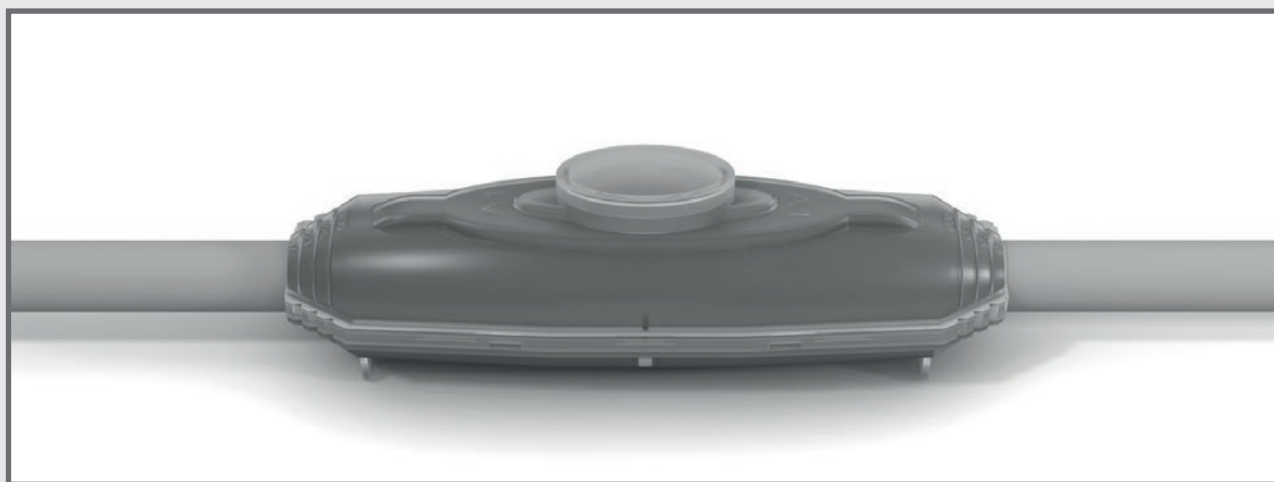


INSTALLATION INSTRUCTIONS



SELECT LANGUAGE

ITALIANO

ENGLISH

FRENCH

ESPAÑOL

PORTUGUESE

LATVIAN

LITHUANIAN

ESTONIAN



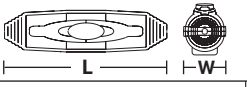


0,6/1 kV
EN 50393

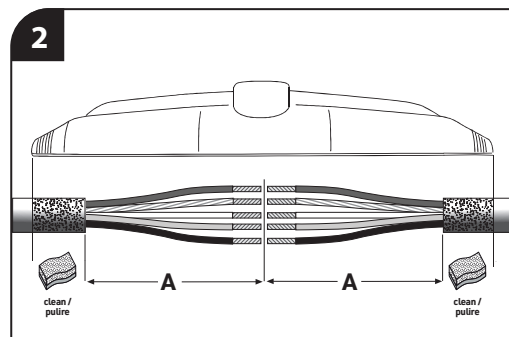
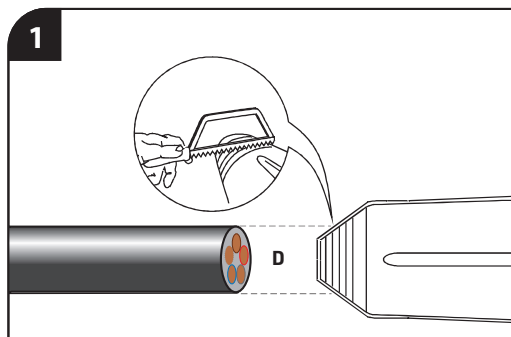
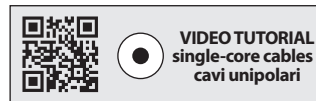
UK
CA



MADE IN ITALY



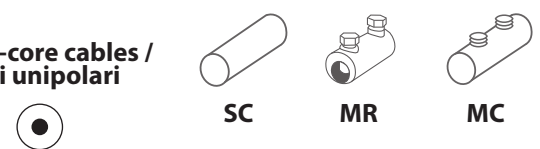
		SKA0	SKA1	SKA2	SKA3S	SKA3	SKA4
	mm	190 × 45	191 × 51	240 × 62	357 × 62	325 × 95	520 × 100
cable diameter / diametro dei cavi	D mm	8 - 26	7 - 30	8 - 35	23 - 35	20 - 54	33 - 60
conductor cross-section / sezione dei conduttori	 mm ²	6 - 50	6 - 70	25 - 185	50 - 185	95 - 400	240 - 500
	 mm ²	1,5 - 4	2,5 - 10	4 - 16	25 - 50	25 - 95	120 - 150
A	mm	75	75	100	120	130	175




3


**Suggested connectors /
Connettori consigliati**

**single-core cables /
cavi unipolari**

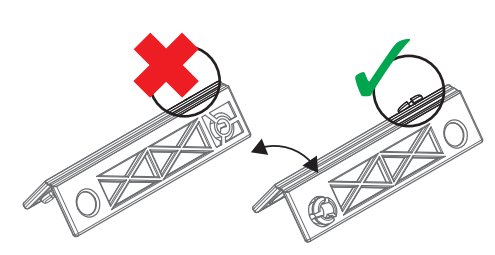
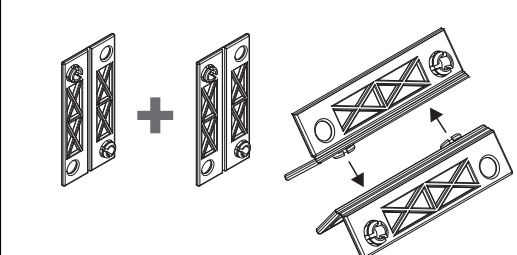
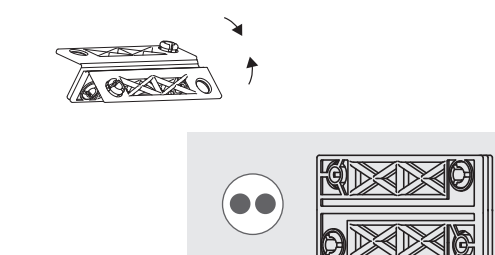
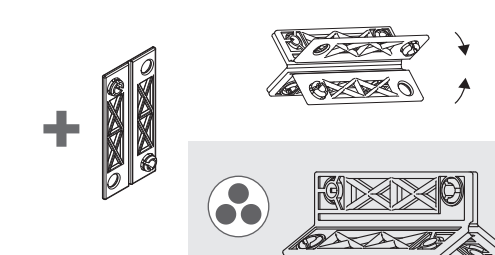
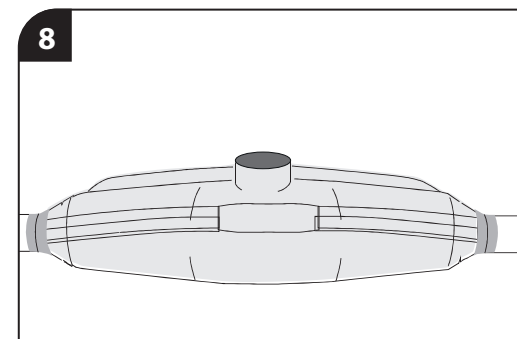
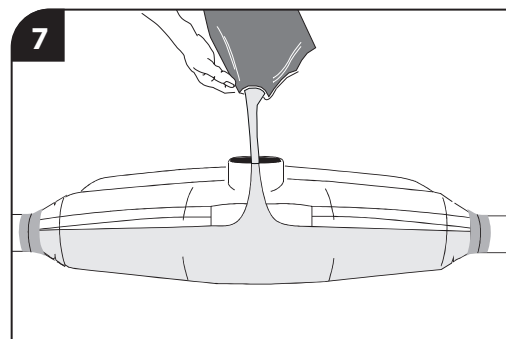
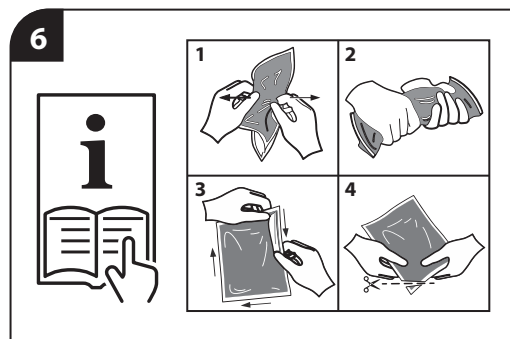
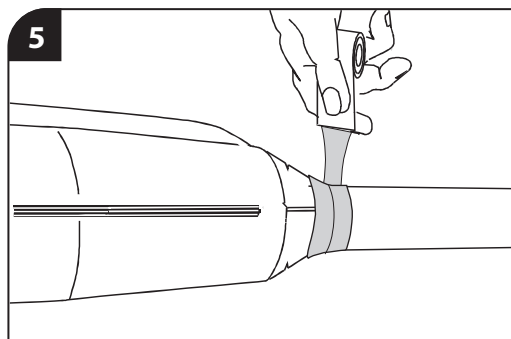


**multi-core cables /
cavi multipolari**





4 core-separator for multi-core cables / separatore delle fasi per cavi multipolari

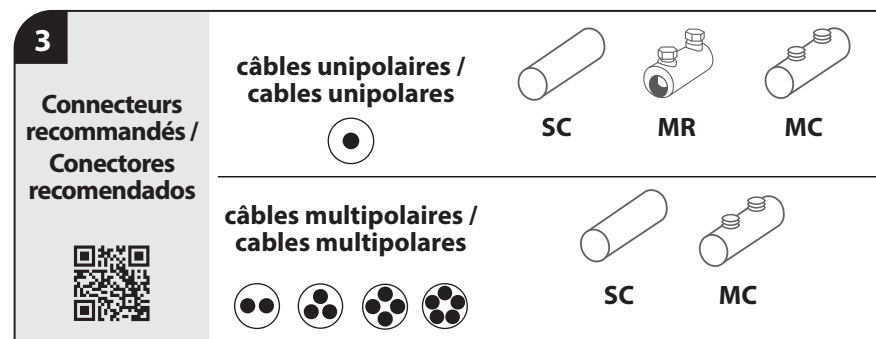
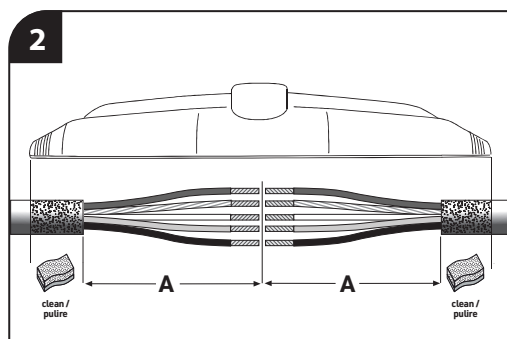
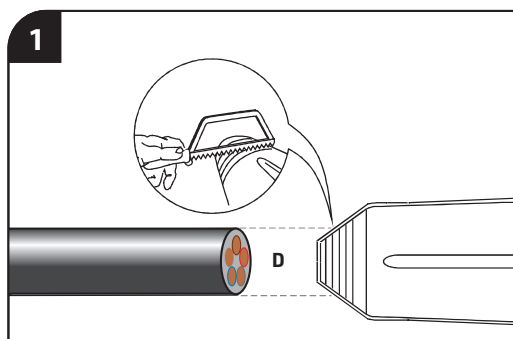
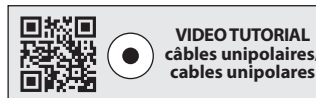
Nota d'installazione

Le informazioni contenute in queste istruzioni di installazione sono destinate ad operatori specializzati ed hanno lo scopo di descrivere il corretto metodo di installazione di questo prodotto. Dal momento che Etelec Italia non può controllare le reali condizioni d'applicazione in opera che influenzano l'installazione, è responsabilità dell'Utilizzatore determinare l'applicabilità del metodo in relazione alle reali condizioni di posa. Gli obblighi di Etelec Italia sono solamente quelli contenuti nelle condizioni normali di vendita Etelec Italia per il prodotto ed in nessun caso Etelec Italia sarà responsabile per ogni altro danno incidentale, indiretto o consequenziale che derivi dall'uso o dal cattivo utilizzo dei prodotti.

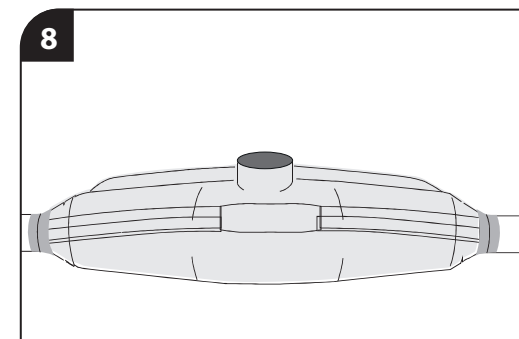
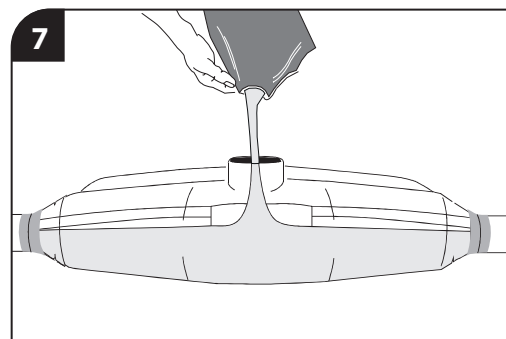
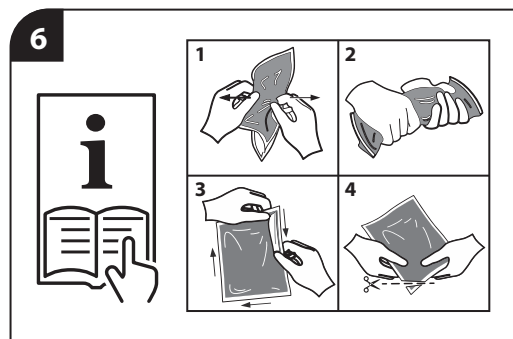
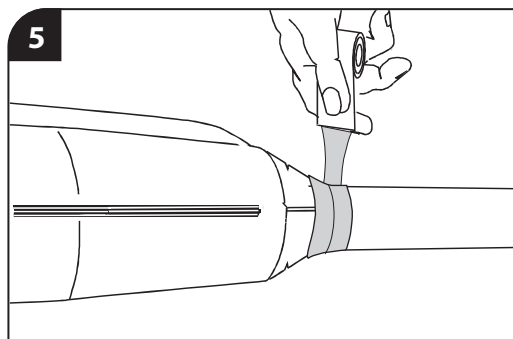
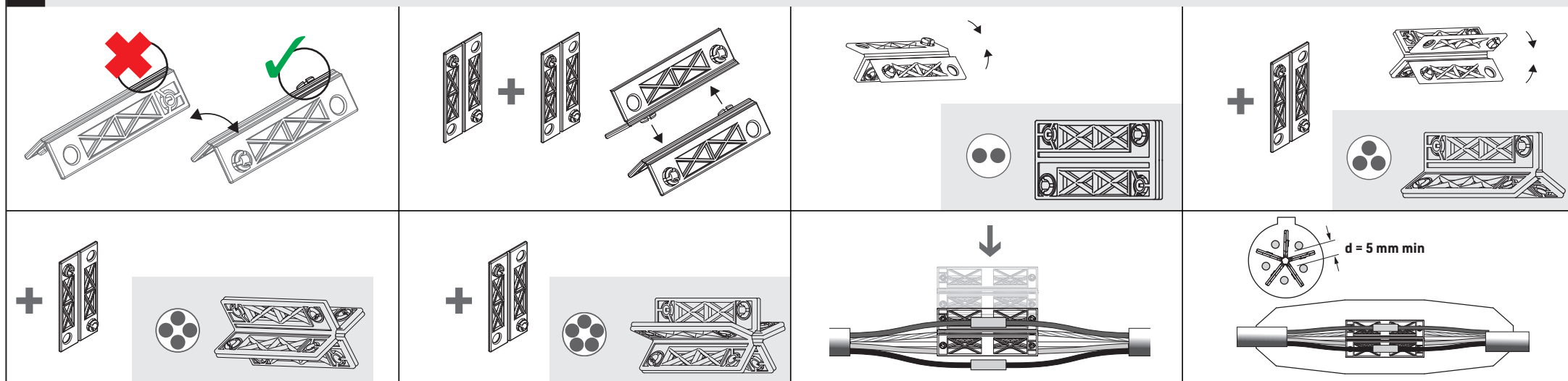
Remark

The information contained in these instructions are intended to describe the correct method of installation of this product. Since the manufacturer can not control the actual laying conditions that affect the installation, it is the user's responsibility to determine the applicability of the method in relation to the actual laying conditions. In no case will Etelec be responsible for any other damage, direct or indirect incident resulting from incorrect use of the product.

		SKA0	SKA1	SKA2	SKA3S	SKA3	SKA4
	mm	190 × 45	191 × 51	240 × 62	357 × 62	325 × 95	520 × 100
diamètre du câble / diámetro de cable	D mm	8-26	7-30	8-35	23-35	20-54	33-60
section de conducteur / sección de conductor		6-50	6-70	25-185	50-185	95-400	240-500
		1,5-4	2,5-10	4-16	25-50	25-95	120-150
A	mm	75	75	100	120	130	175



4 séparateur de phase pour câbles multipolaires / separador de fases para cables multipolaires



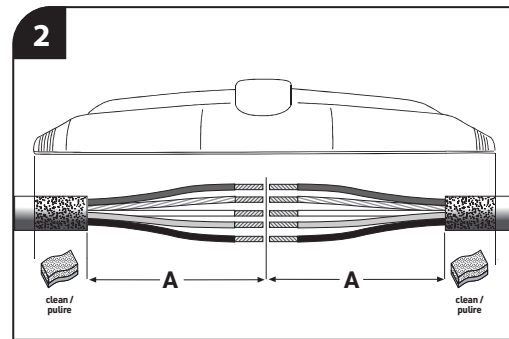
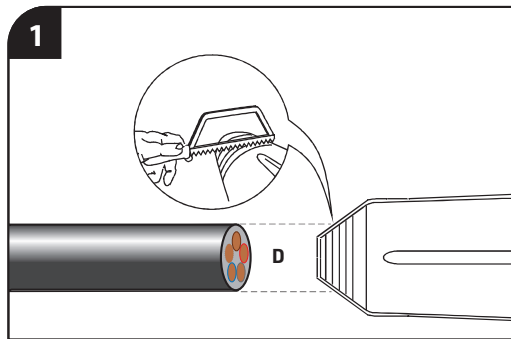
Note d'installation

Les informations contenues dans ces instructions d'installation sont destinées aux opérateurs spécialisés et ont pour but de décrire la méthode correcte d'installation de ce produit. Étant donné qu'Etelec Italia ne peut pas contrôler les conditions réelles d'application sur site influençant l'installation, il appartient à l'utilisateur de déterminer l'applicabilité de la méthode en fonction des conditions réelles de pose. Les obligations d'Etelec Italia se limitent uniquement à celles prévues dans les conditions normales de vente d'Etelec Italia pour ce produit et, en aucun cas, Etelec Italia ne pourra être tenue responsable de tout autre dommage accidentel, indirect ou consécutif résultant de l'utilisation ou de la mauvaise utilisation des produits.

Nota de instalación

La información contenida en estas instrucciones de instalación está destinada a operadores especializados y tiene como objetivo describir el método correcto de instalación de este producto. Dado que Etelec Italia no puede controlar las condiciones reales de aplicación en obra que influyen en la instalación, es responsabilidad del Usuario determinar la aplicabilidad del método con respecto a las condiciones reales de instalación. Las obligaciones de Etelec Italia se limitan exclusivamente a las contenidas en las condiciones normales de venta de Etelec Italia para el producto y, en ningún caso, Etelec Italia será responsable por ningún otro daño incidental, indirecto o consecuente derivado del uso o del uso indebido de los productos.

		SKA0	SKA1	SKA2	SKA3S	SKA3	SKA4
	mm	190 × 45	191 × 51	240 × 62	357 × 62	325 × 95	520 × 100
kabelio skersmuo / kaabli lābimōot	D mm	8 – 26	7 – 30	8 – 35	23 – 35	20 – 54	33 – 60
laidininko skerspjūvis / juhi ristlōige		6 – 50	6 – 70	25 – 185	50 – 185	95 – 400	240 – 500
		1,5 – 4	2,5 – 10	4 – 16	25 – 50	25 – 95	120 – 150
A	mm	75	75	100	120	130	175



3

**Siūlomos jungtys /
Soovitatava d ūhendused**

**vieno branduolio /
ūhe tuumaga**

SC MR MC

**daugiagysliai kabeliai /
mitmejuhtmelised kaablid**

SC MC

4 daugiagyslių kabelių gyslų atskyriklis / sūdamiku eraldaja mitmejuhtmelistele kaablitele

4.1

4.2

4.3

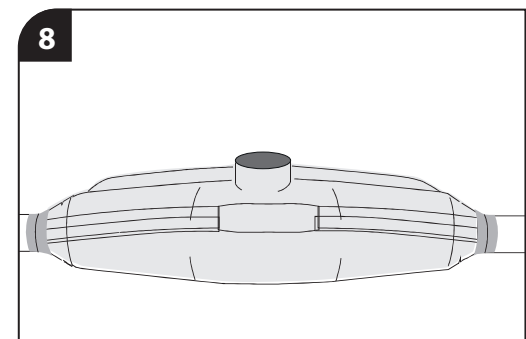
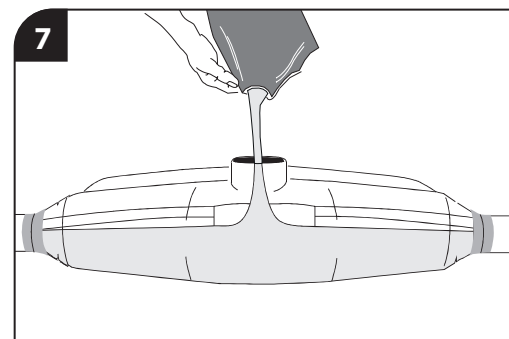
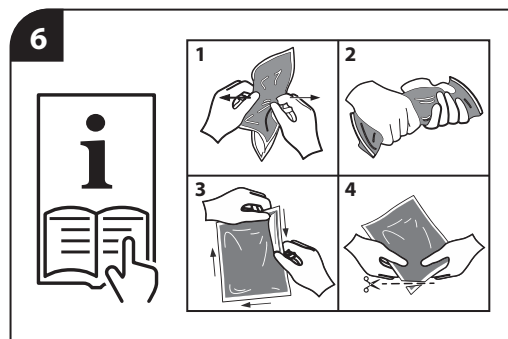
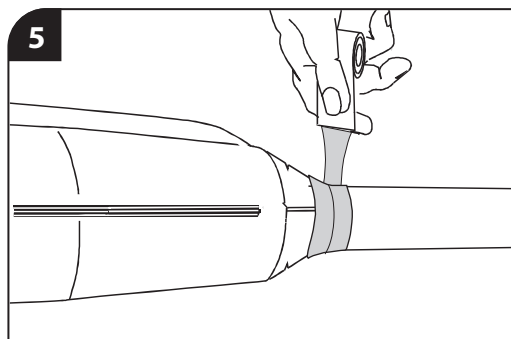
4.4

4.5

4.6

4.7

4.8



Pastaba
Šiose instrukcijose pateikta informacija yra skirta aprašyti teisingą montavimo būdą šį gaminį. Kadangi gamintojas negali kontroliuoti faktinių klijavimo sąlygų, kurios turi įtakos montavimui, todėl naudotojo pareiga nustatyti, ar galima taikyti metodą, atsižvelgiant į faktines klijavimo sąlygas. Jokių būdu „Etelec“ neatsako už bet kokią kitą žalą, tiesioginį ar netiesioginį incidentą, atsiradusį dėl netinkamo naudojimo gaminį.

Mārkus
Kāesolevates juhīstes sisalduv teave on eesmārk on kirjeldada ōiget paigaldusmeetodit selle toote paigaldamist. Kuna tootja ei saa kontrollida paigaldamist mōjutavaid tegelikke paigaldamistingimusi, on see kasutaja kohustus māārata kindlaks, kas see on kohaldatav. Meetodi vastavust tegelikele paigaldustingimustele. Etelec ei vastuta mingil juhul muude kahjude eest, otsese vōi kaudse vahejuhtumi eest, mis tuleneb ebaōigest kasutamīst toote kasutamīst.